

**SDN** | STRIP  
DISTRICT

— N E I G H B O R S —

# TOWN HALL

APRIL 24, 2024

HOSTED BY



**Cancer Bridges**

Every cancer journey is unique.  
We are here for you.

**Riverlife**



**WELCOME**

**Pamela Austin**

Strip District Neighbors

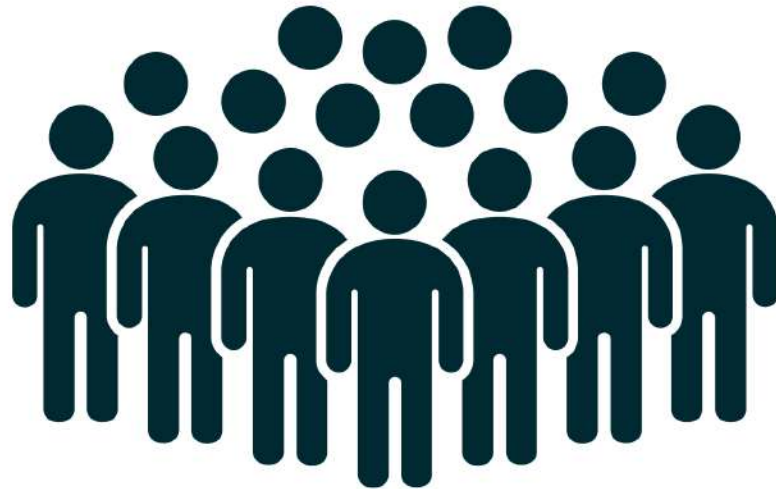


**THANK YOU!**

**Stephanie Ciranni**

Cancer Bridges

1 IN 2



ALLEGHENY  
COUNTY  
RESIDENTS  
WILL RECEIVE  
A CANCER  
DIAGNOSIS  
IN THEIR  
LIFETIME.



Those with or have had a diagnosis



Caregivers & Supporters

Children, Teens, & Families

Bereaved

Individuals of every age, facing any type, stage, or experience with cancer, are welcome to join Cancer Bridges and receive the social, emotional, and informational tools they need, at no cost.

SHORT-TERM SUPPORTIVE COUNSELING

COMMUNITY CONNECTIONS

SUPPORT GROUPS

HEALTH & WELLNESS

EDUCATION

CANCER BRIDGES

Every cancer journey is unique.  
We are here for you.

CREATIVE EXPRESSION & SOCIAL ACTIVITIES

“Participating in these programs has been and continues to be a rewarding experience. I’m not only investing in myself, but I feel I’m investing in others, as well. The “we” mentality and the sense of belonging associated with these programs helps to diminish the isolation one can feel with a cancer diagnosis/history.”



594

Short-Term  
Supportive  
Counseling  
Sessions Held



275

Adult Support  
Groups  
Offered



569

Health &  
Wellness  
Programs  
Held





“The camp for kids was wonderful. My sons both had a wonderful healing time, and I would say we both learned things from each other through the activities. As a parent who stayed for some of the parent meetings, I would say those are an excellent idea. I loved being informed and learning a way to engage my children about their emotions through the crafts.”



438

Family & Youth  
Programs  
Offered

317

Social Programs &  
Creative Expression  
Workshops Held

100

Education &  
Community  
Connections  
Programs Offered





## Spread the Word!

Like and follow us on social media to stay up to date with our latest program and event information!



@CancerBridgesPgh



@CancerBridges



@CancerBridges



[www.cancerbridges.org](http://www.cancerbridges.org)



## Volunteer!

Cancer Bridges welcomes volunteers throughout the year for a variety of different needs! Please contact Rowan at [rowan@cancerbridges.org](mailto:rowan@cancerbridges.org) for more information.



## Attend an Event!

OUR GLASS IS HALF FULL | April 26  
GOLF CLASSIC | June 3  
LOCAL FLAVOR | September 12  
JONAH HART MEMORIAL 5K | October 5  
LIGHT UP GALA | November 22



## Donate!

[www.cancerbridges.org/donate](http://www.cancerbridges.org/donate)  
United Way: 221008  
Check for a company matching gift program!





The measure of any great civilization is its cities, **and a measure of a city's greatness is to be found in the quality of its public spaces, its parks, and squares.**

*– John Ruskin*



# AGENDA

---

1. State of our Open Space
2. Riverbank Conditions and Trail Extension
3. Riverfront Trail Improvements
4. Kayak Pittsburgh Community Hub
5. Urban Plazas
6. Completing the Loop and the Big Picture
7. Announcements





# STATE OF OUR OPEN SPACE

**Pamela Austin**

Strip District Neighbors



**THE VISION**

**15TH STREET PARKLET**

**RIVERFRONT TRAIL**

**THE DISTRICT**

**RIVERFRONT TRAIL**

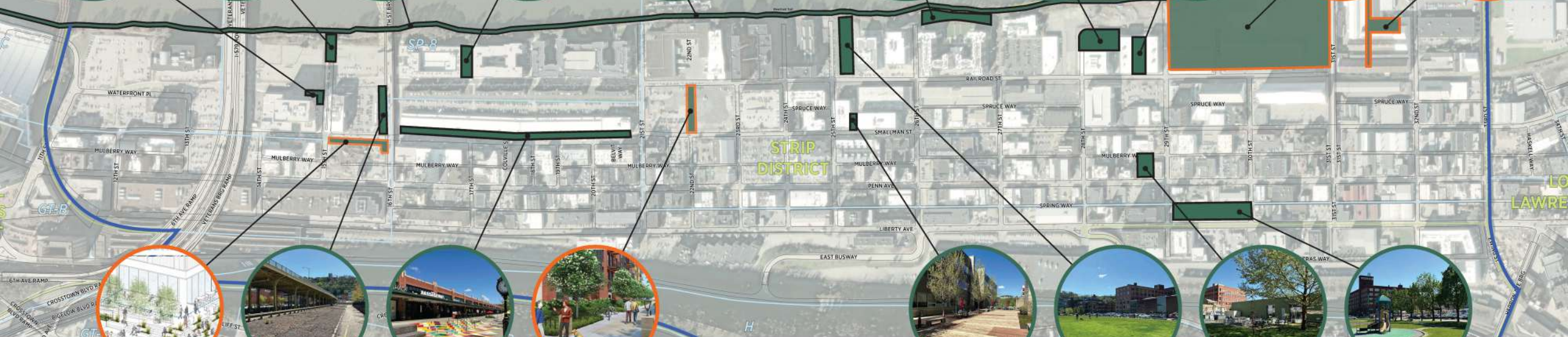
**3 CROSSINGS RIVERFRONT**

**HOOPER PARK**

**THE STACKS**

**THE TOWPOUND (PROPOSED)**

**31ST STREET (PROPOSED)**



**1501 PENN (PROPOSED)**

**16TH STREET GARDEN**

**THE TERMINAL BUILDING**

**BRICKWORKS (PROPOSED)**

**SDN STRIP DISTRICT**  
- NEIGHBORS -

**2555 SMALLMAN PLAZA**

**DOG PARK**

**RDCOLLAB PARKLET**

**DENNY PARK**





# RIVERBANK CONDITIONS & TRAIL EXTENSION

**Gavin White**

Riverlife





Photo credit: Riverlife

**Riverlife**

One North Shore Center  
12 Federal Street | Suite 130  
Pittsburgh, PA 15212

[riverlifepgh.org](http://riverlifepgh.org)





# Riverlife

**We are Riverlife.  
We believe Pittsburgh's  
rivers bring life to our region.**

## Vision

**We envision a Pittsburgh where  
thriving world-class riverfronts are  
essential to the region and belong  
to everyone.**

## Mission

**We create, activate, and celebrate  
Pittsburgh's riverfronts, connecting  
people through exceptional places  
and experiences.**

## Values

### **We elevate social equity.**

We center our work on the idea that the riverfronts belong to everyone and must be a model for community-driven, equitable development.

### **We embrace innovative ideas.**

We tackle big challenges with creative solutions that drive transformational change.

### **We advocate for great design.**

We cultivate riverfront experiences that are elevated by high-quality, community-focused, and regenerative design.

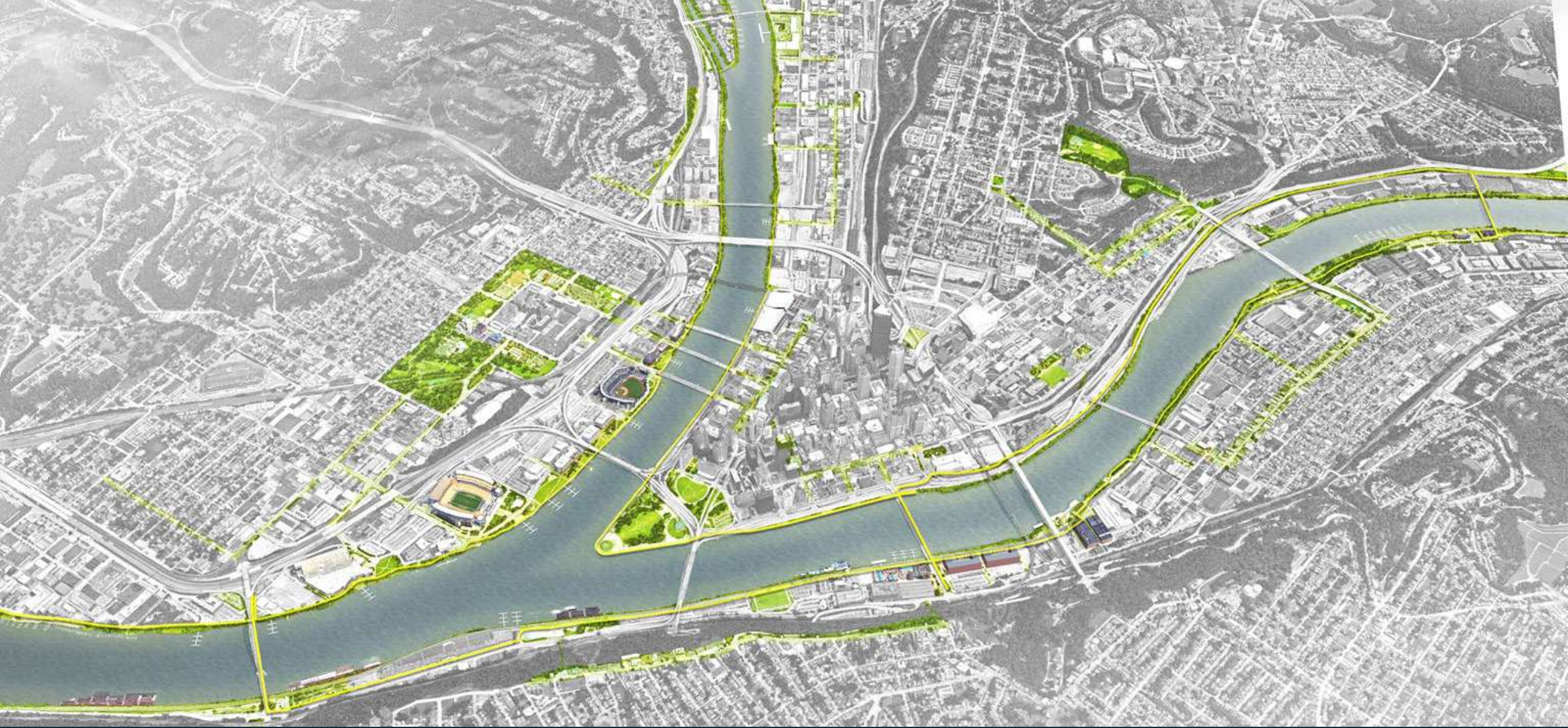
### **We collaborate and connect.**

We nurture broad-based partnerships with community, philanthropy, and key stakeholders to advance our mission.

### **We are a trusted leader.**

We advance a shared vision through our unique position at the intersection of economic development, arts & culture, and sustainability.

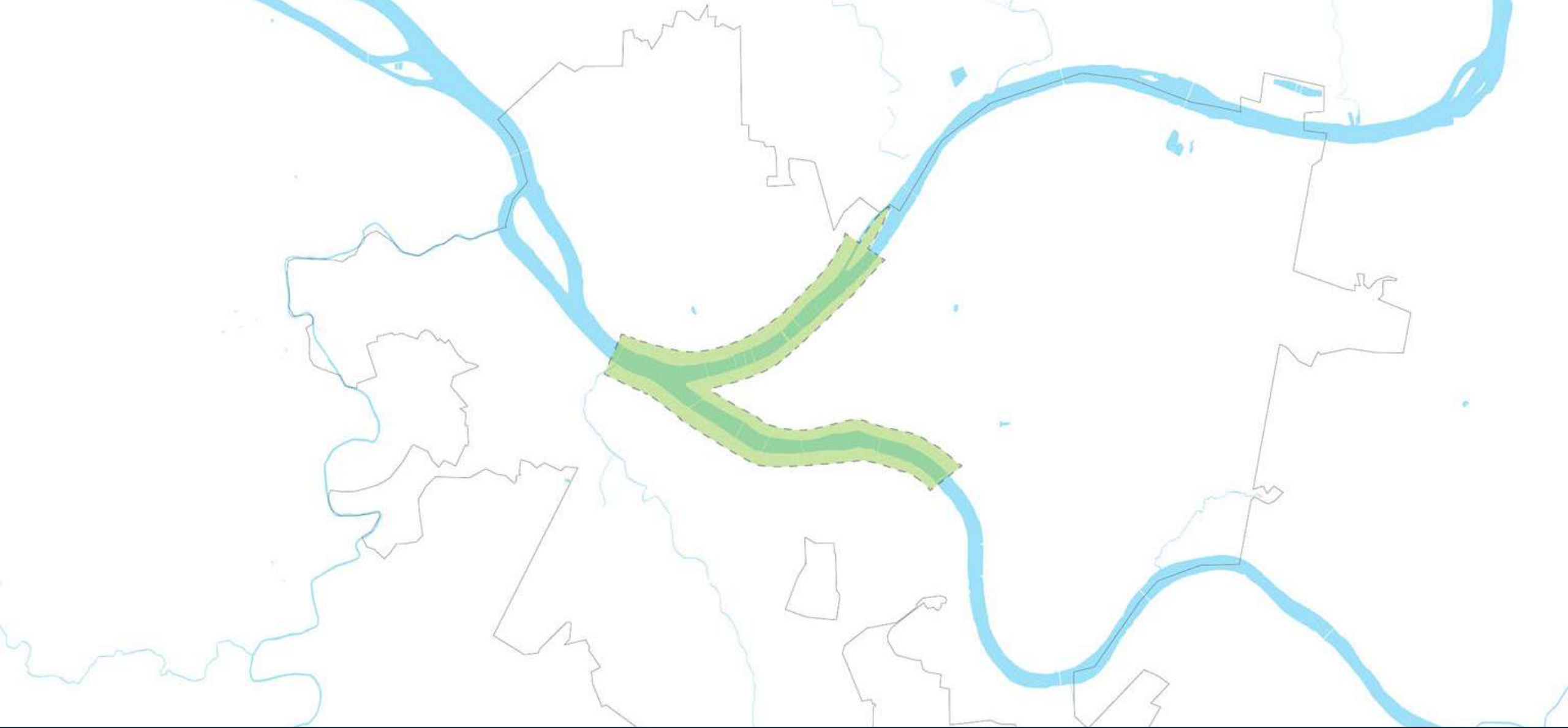




**Riverlife**

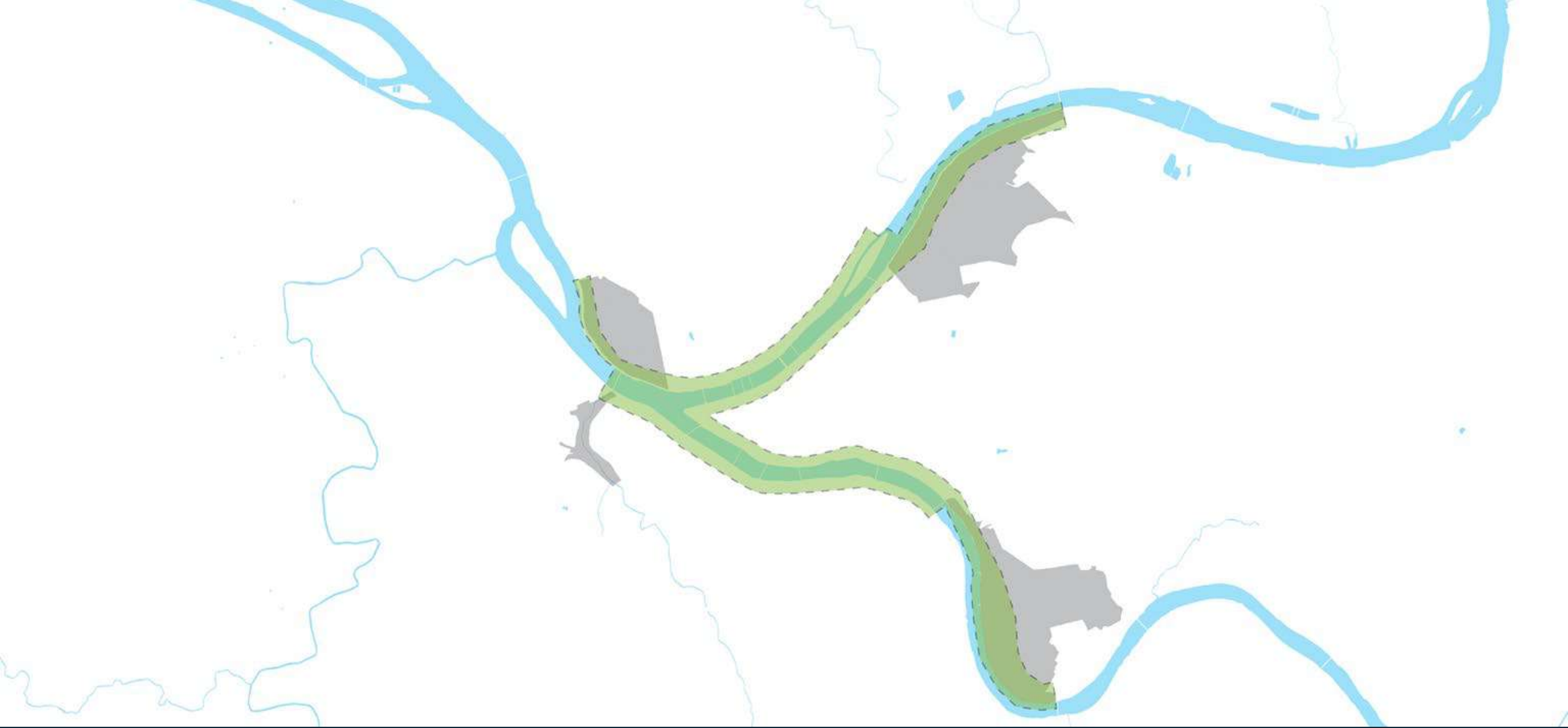
Service Area





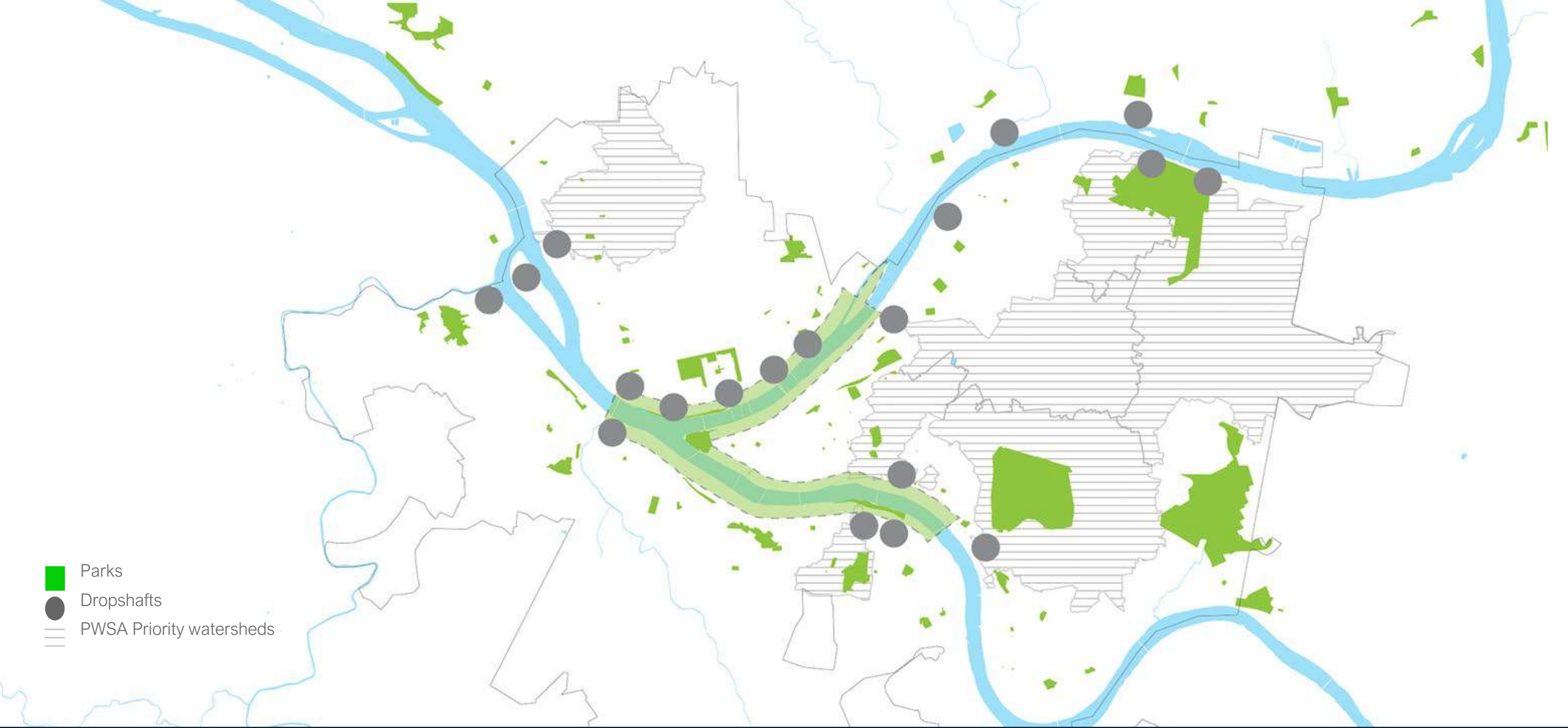
**Riverlife**

**Complete and enhance the existing Loop  
West End Bridge to Hot Metal Bridge to  
31<sup>st</sup> Street Bridge**



**Riverlife**

**Expand to adjacent and specific geographies**  
*Hazelwood, Manchester, Lawrenceville, West End*



**Riverlife**

Engage mission-critical issues of regional influence and impact





**Allegheny Landing Master  
Planning and  
Reconstruction**

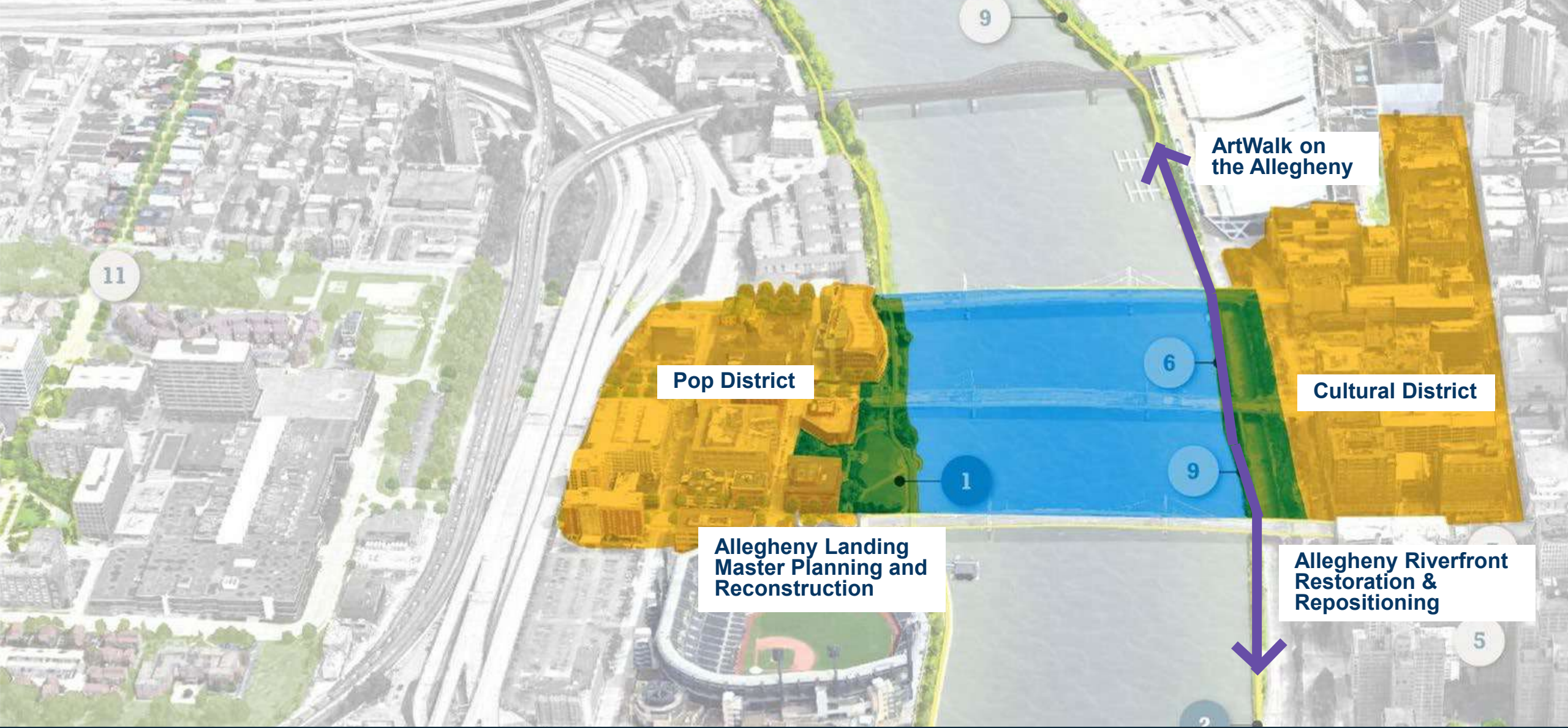
**Allegheny Riverfront  
Restoration & Repositioning**

**Point State Park  
Connector**

**North Shore Riverfront  
Ecosystem Restoration**

**Manchester-Chateau Connector  
& Saw Mill Run Park**





**ArtWalk on the Allegheny**

**Pop District**

**Cultural District**

**Allegheny Landing Master Planning and Reconstruction**

**Allegheny Riverfront Restoration & Repositioning**

**Riverlife**

**The Sister Bridges Experience**





**Riverlife**

The Sister Bridges Experience





**Riverlife**

**The Sister Bridges Experience**





**Riverlife**

**Gateway to the West End**





**Riverlife**

**Gateway to the West End**





**PennDOT  
West End Bridge  
Restoration**

**Esplanade**

**Alcosan Tunnel  
Project**

**USS Requin**





**Riverlife**

Gateway to the West End

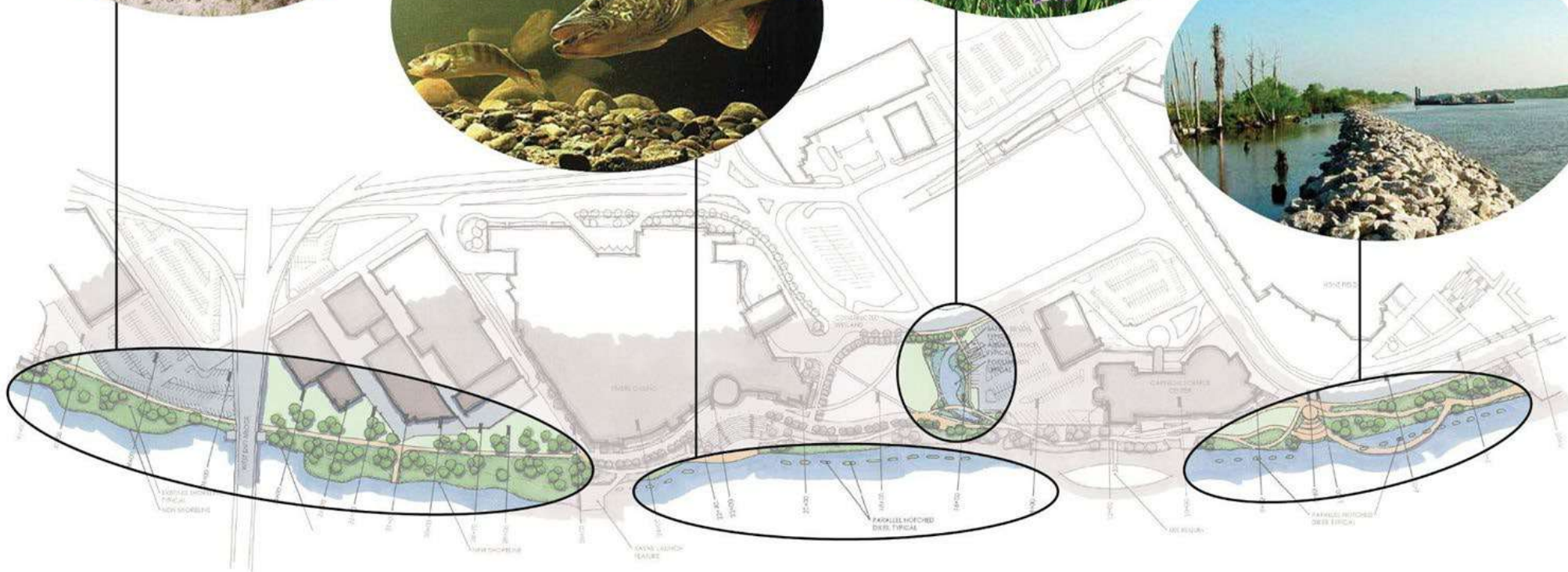




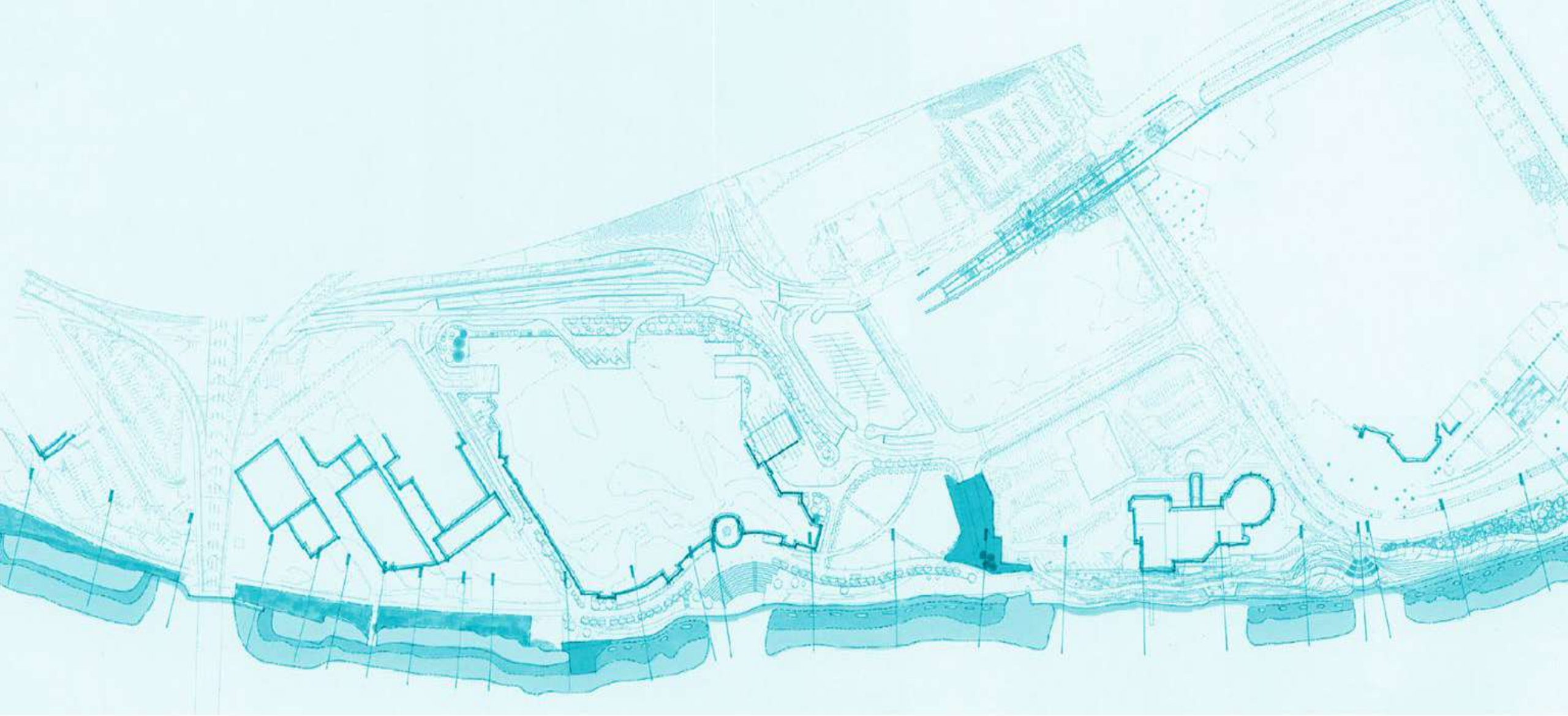
**Riverlife**

**North Shore Ecosystem Restoration**





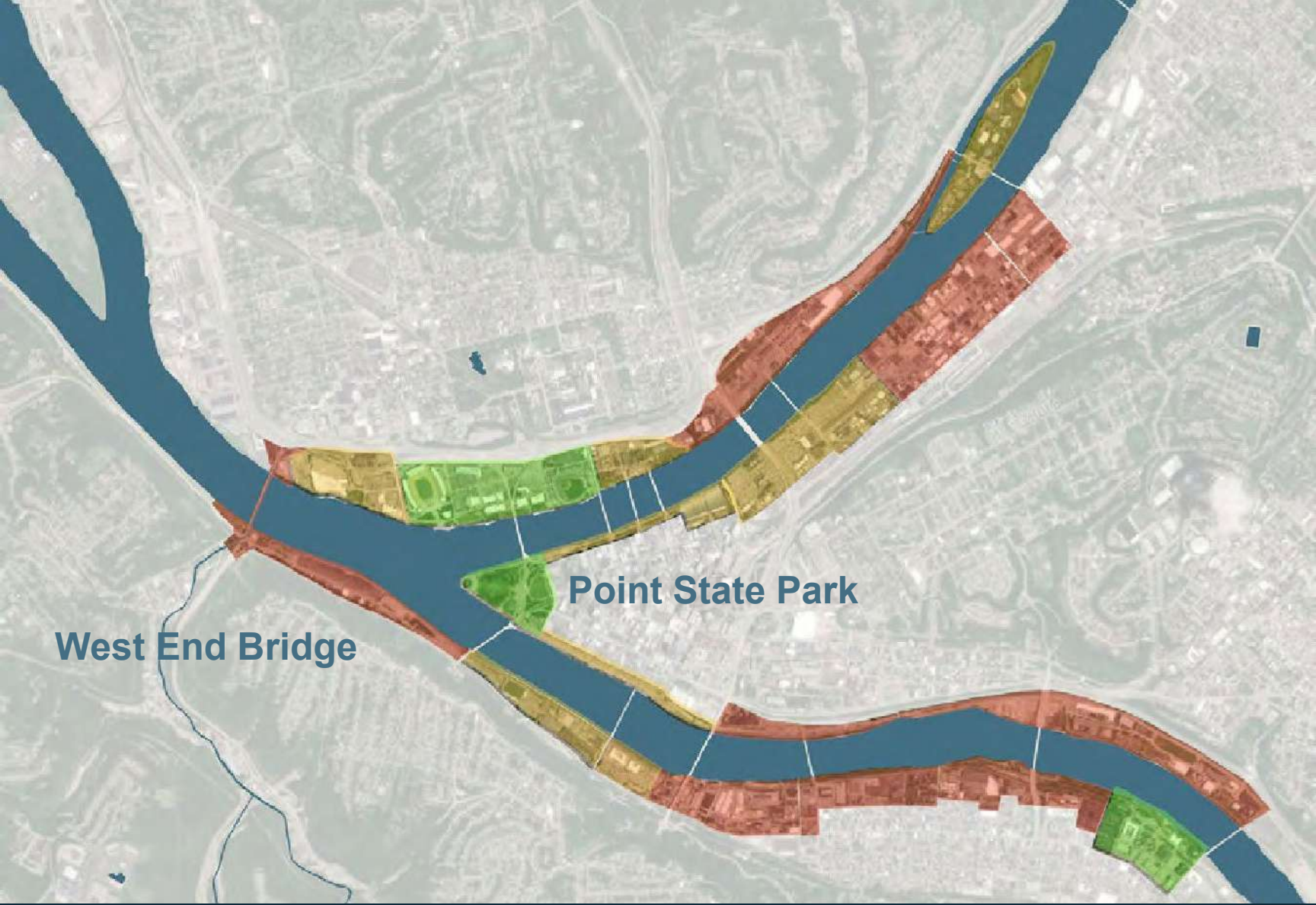




**Riverlife**

**North Shore Ecosystem Restoration**





## Point State Park

**87%**  
OVERALL SCORE

**Spatial Scale** Node  
**Spatial Character** Monumental  
**Riverbank Character** Hard edge  
**Programming** Regional events, multiple entities, Art Corps, Regatta, Three Rivers Arts Festival  
**Destinations** Park, Museum, Fountain, Amphitheater

EXPERIENCE

- 84%** CONNECTIVITY  
92% ADA score
- 100%** PLACE
- 81%** ECOLOGY
- 100%** MAINTENANCE

## West End Bridge

**29%**  
OVERALL SCORE

**Spatial Scale** Corridor  
**Spatial Character** Highway  
**Riverbank Character** Hybrid edge, Natural edge  
**Programming** None  
**Destinations** None

EXPERIENCE

- 31%** CONNECTIVITY  
33% ADA score
- 14%** PLACE
- 39%** ECOLOGY
- 0%** MAINTENANCE



FUNCTION

FUNCTION		Trail Frontage							Natural Landscape					Public Space							
		MIN'S/ 1000 LF	X	ANNUAL FREQUENCY					MIN'S/ 1000 SF	X	ANNUAL FREQUENCY				MIN'S/ 1000 SF	X	ANNUAL FREQUENCY				
				A	B	C	D	F			A	B	C	D			F	A	B	C	D
LITTER REMOVAL	VACUUM	17		3	2	1	0	0	--	--	--	--	--	--	10		3	2	1	0	0
	MANUAL	100		8	4	2	0	0	1.7	12	6	4	3	0	1.7	12	8	6	4	2	0
DEBRIS REMOVAL	BLOWER	50		6	4	2	2	0	--	--	--	--	--	5		8	6	4	2	0	
	MANUAL	17		6	4	2	2	0	1.7	12	6	4	3	0	1.7	8	6	4	2	0	
SNOW	PLOW	120		10	6	4	2	0	--	--	--	--	--	1.2		10	6	4	2	0	
	BLOWER	60		10	6	4	2	0	--	--	--	--	--	6		10	6	4	2	0	
	MANUAL	50		10	6	4	2	0	--	--	--	--	--	5		10	6	4	2	0	
TRASH	TRASH REMOVAL	4		52	26	26	12	0	--	--	--	--	--	1.44		52	26	26	12	0	
MOWING	HYDROMOWER	40		24	18	12	6	0	--	--	--	--	--	4		24	18	12	6	0	
	LAWN MOWER	90		24	18	12	6	0	--	--	--	--	--	9		24	18	12	6	0	
INVASIVE SPECIES	LAWN MOWER	--		--	--	--	--	--	9	12	6	4	3	0	--		--	--	--	--	
	WEED WACKER	30		24	18	12	6	0	30	6	4	3	2	0	30	3	2	2	1	0	
WEED CONTROL	MANUAL	--		--	--	--	--	--	150	4	3	2	1	0	150	3	2	2	1	0	
	TRIMMER	--		--	--	--	--	--	20	2	1	1	0.5	0	--		--	--	--	--	
	MANUAL	--		--	--	--	--	--	60	4	3	2	1	0	--		--	--	--	--	
LANDSCAPE MAINTENANCE	SPRAY	--		--	--	--	--	--	40	3	2	1	0.5	0	--		--	--	--	--	
	PRUNE SMALL TREES & SHRUBS	--		--	--	--	--	--	120	2	2	1	0.5	0	120	3	2	2	1	0	
	CULTIVATE PLANT BEDS	--		--	--	--	--	--	--	--	--	--	--	--	30	3	2	2	1	0	
	MULCH	--		--	--	--	--	--	--	--	--	--	--	--	50	3	2	2	1	0	
	EDGING	--		--	--	--	--	--	--	--	--	--	--	--	25	2	1.5	1	0.5	0	
	POWER WASH SURFACES	--		--	--	--	--	--	--	--	--	--	--	88	2	2	1	1	0		
	FLUSHER TRUCK (GOOSE POOP)	15		12	8	6	4	0	--	--	--	--	--	--		--	--	--	--	--	
	MISC. FACILITIES MAINTENANCE	120		1.5	1	1	0.5	0	--	--	--	--	--	20		2	1.5	1	0.5	0	
	SYSTEMS MAINTENANCE	--		--	--	--	--	--	--	--	--	--	--	20		2	1.5	1	0.5	0	
	PARK INSPECTION	--		--	--	--	--	--	--	--	--	--	--	10		2	1.5	1	0.5	0	



Evaluation criteria include:

- Bank material and condition
- Slope
- The presence and type of vegetation
- Extent of impervious surfaces
- Presence and/or extent of existing features that could contribute to bank instability (ex, existing erosion or undercutting, man made structures)

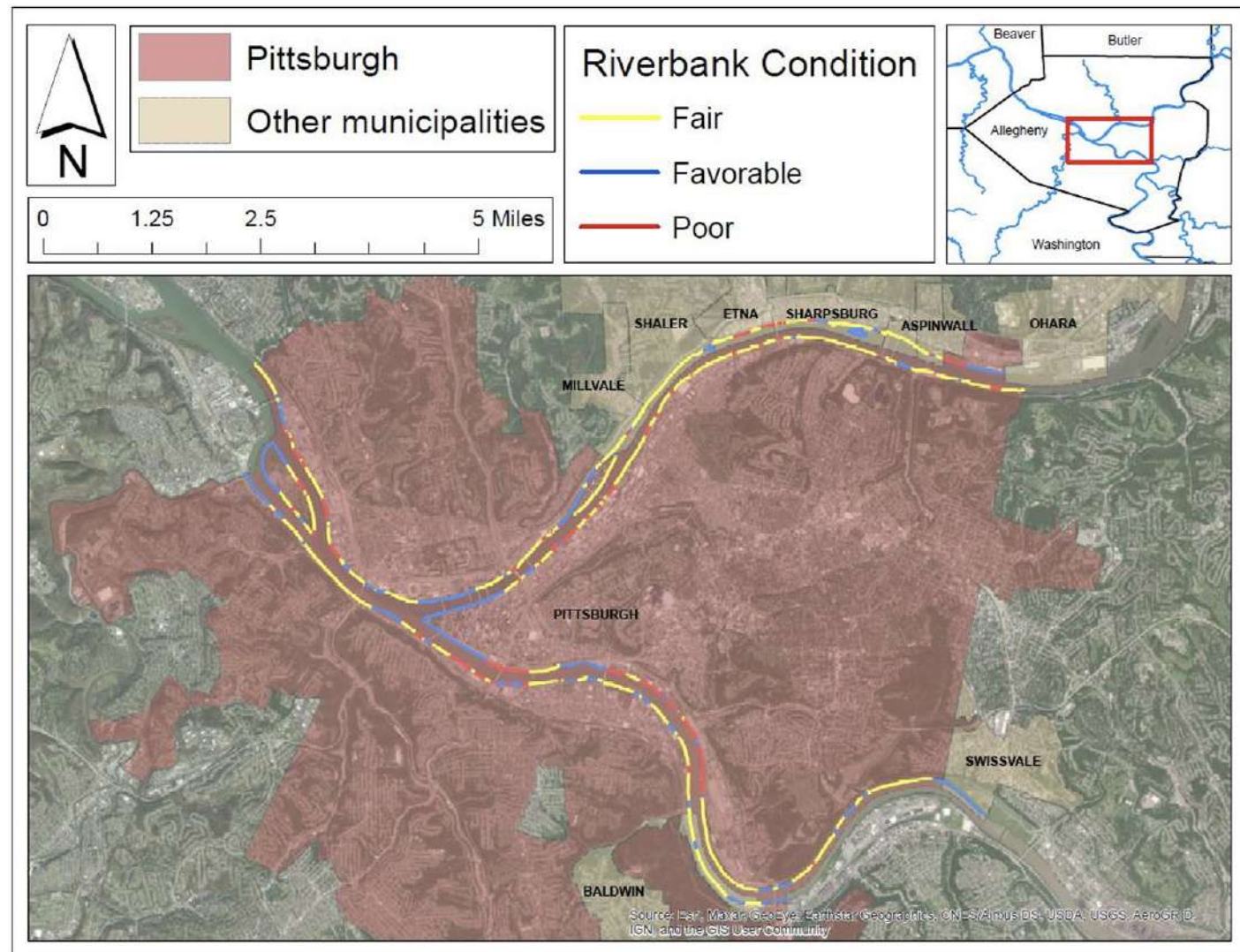
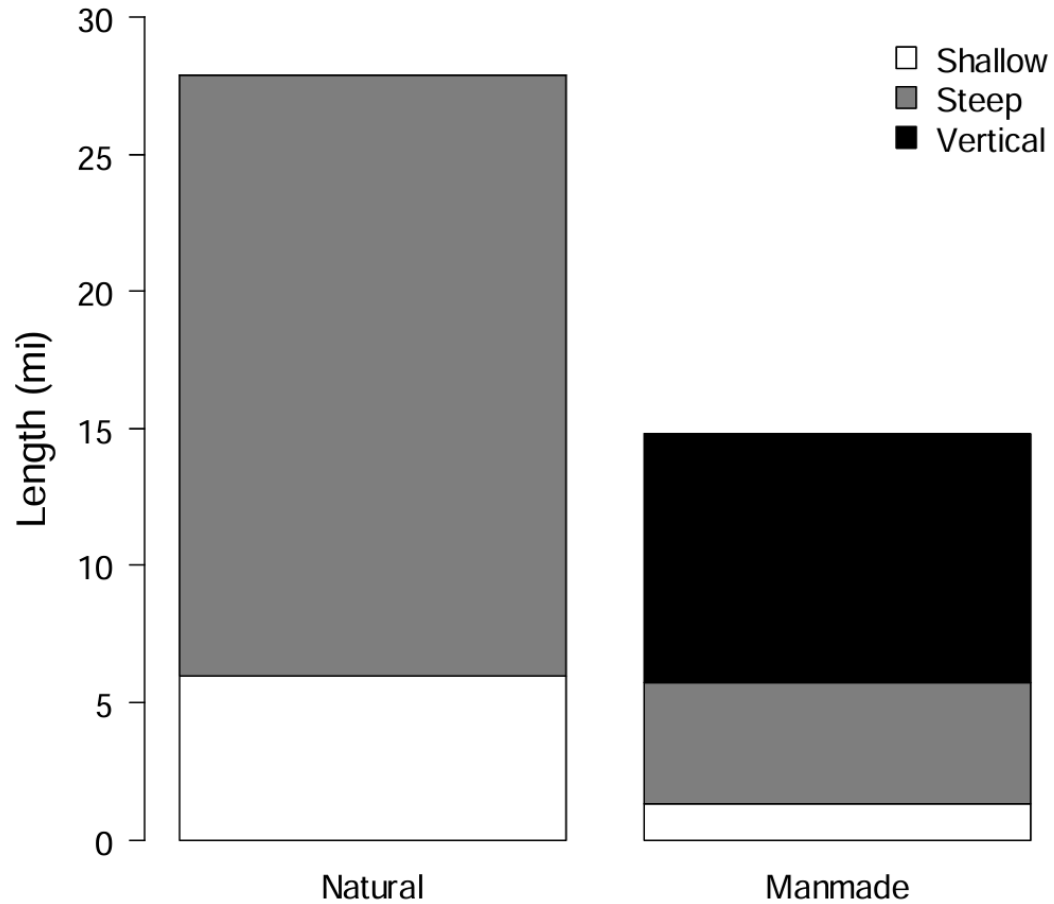
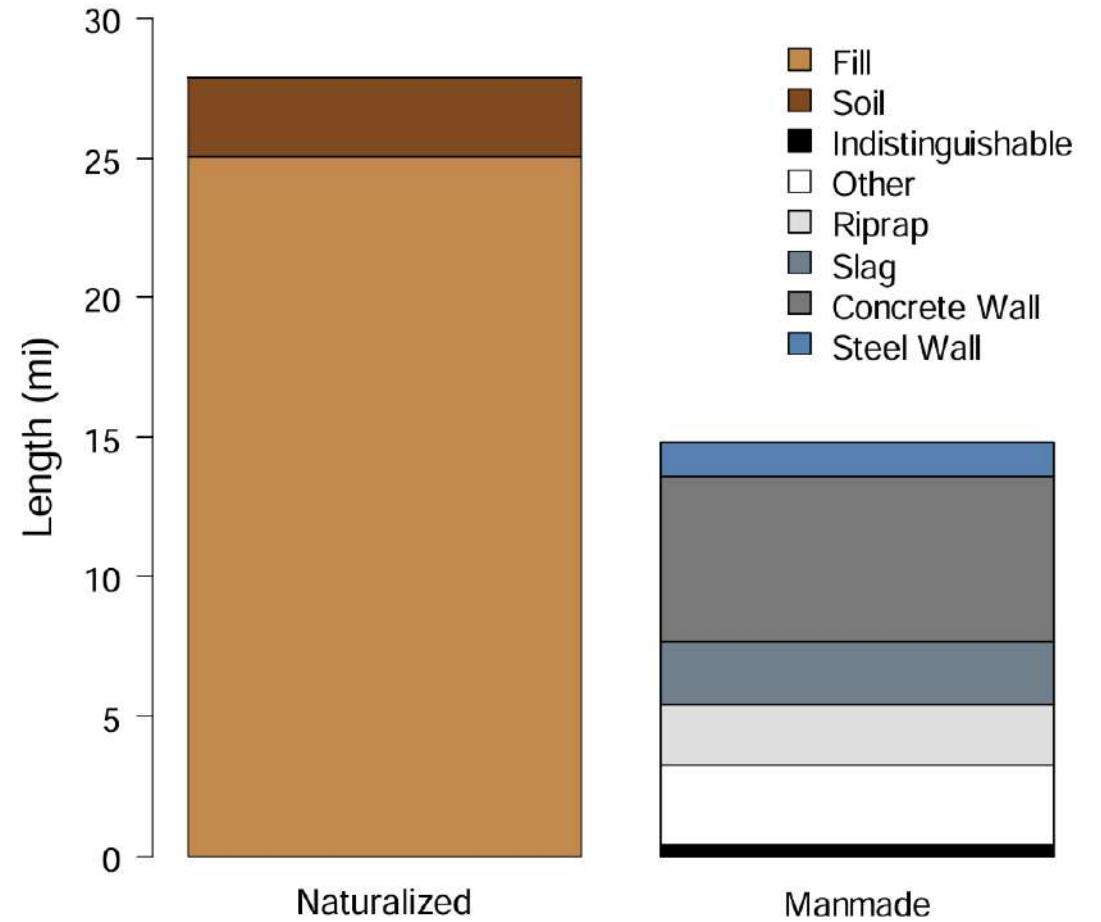


Figure ES1. Map of final riverbank condition assessment scores for the study area.



**Figure 18.** Length of natural/naturalized and manmade riverbanks within the study characterized by shallow (i.e., less than 2H:1V), steep (i.e., greater than 2H:1V), and vertical slopes.

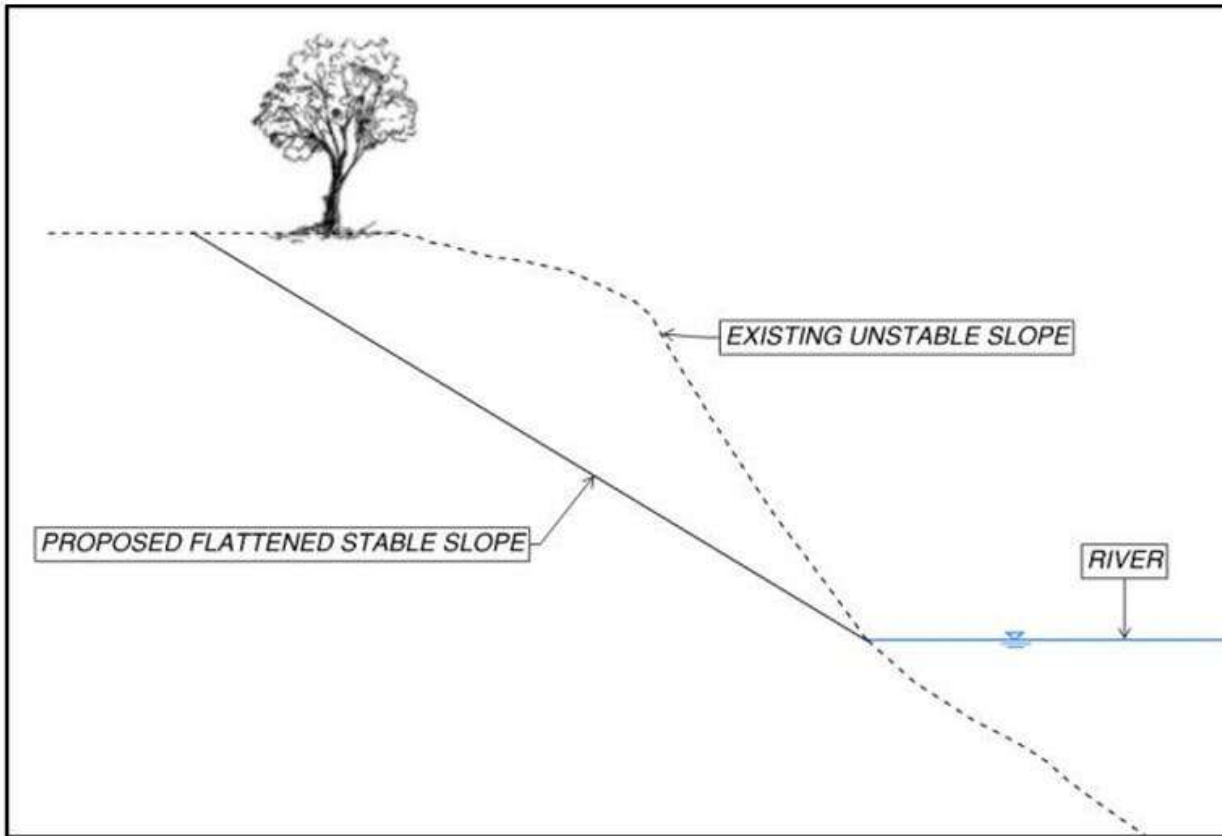


**Figure 14.** Length of riverbank within the study area classified as naturalized and manmade materials.









**Figure 45.** Typical cross section view and photograph of a site along Pittsburgh riverbank showing the flattening of an existing unstable slope with erosion control fabric placed on the flattened slope.

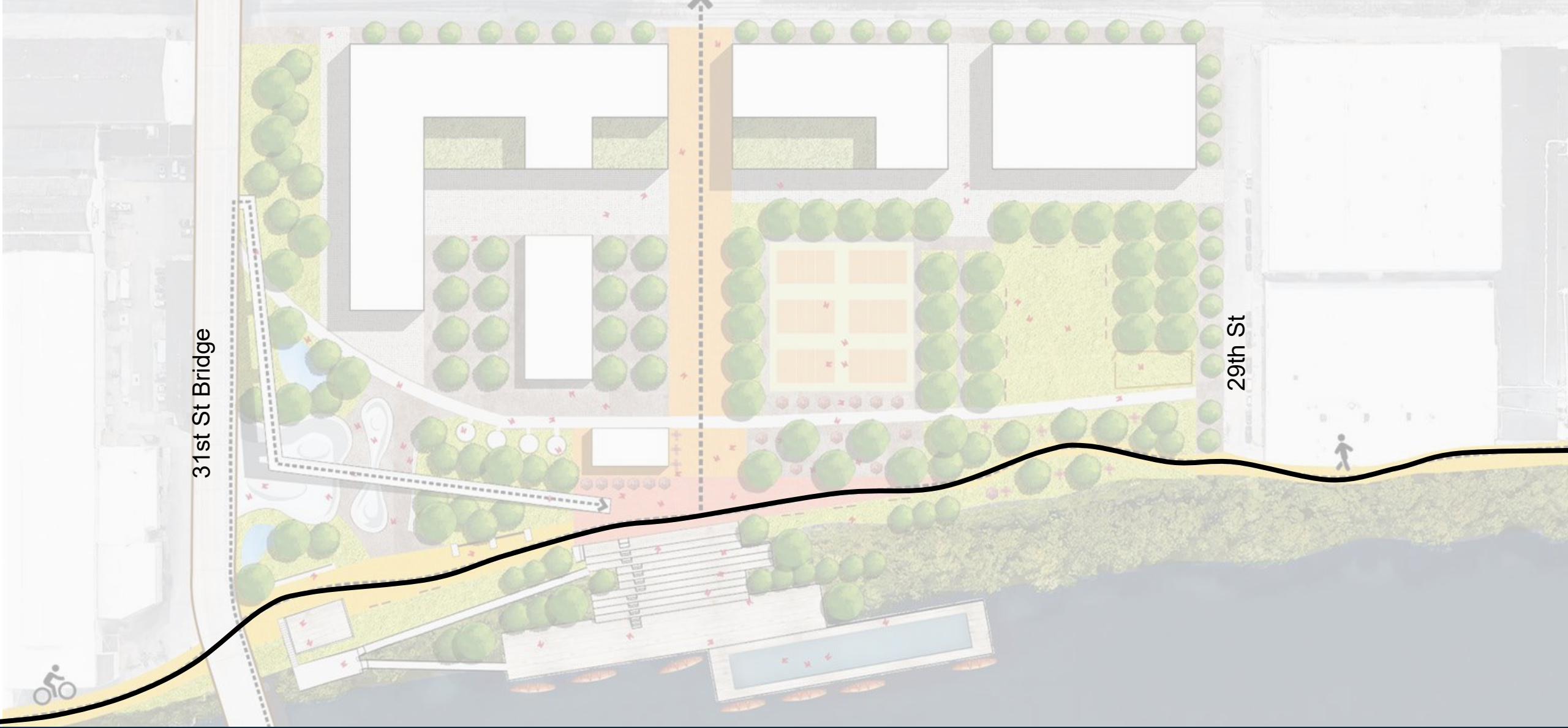




**Riverlife**

**City Landing - Long-term Vision**





31st St Bridge

29th St

**Riverlife**

City Landing - Near-term Plan



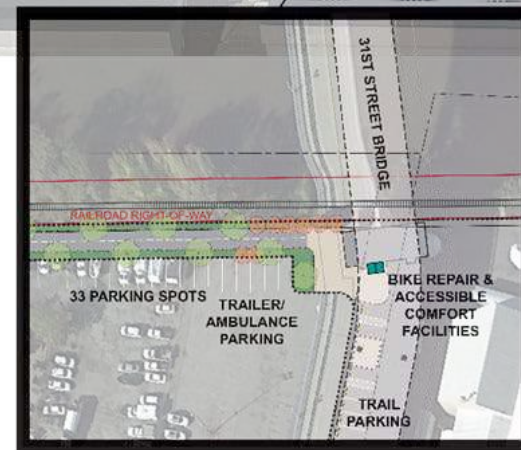
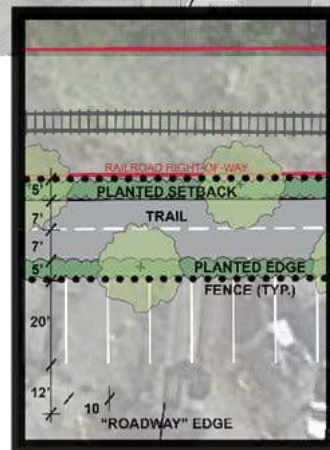
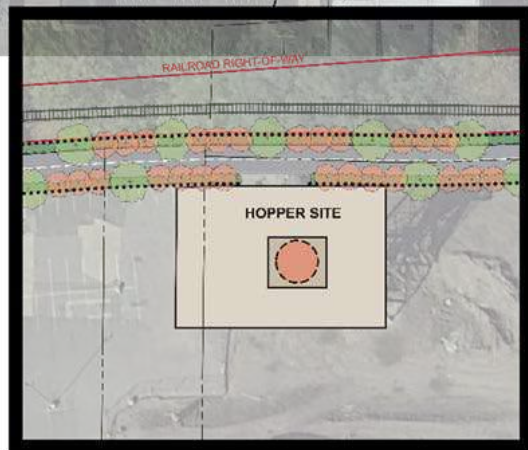
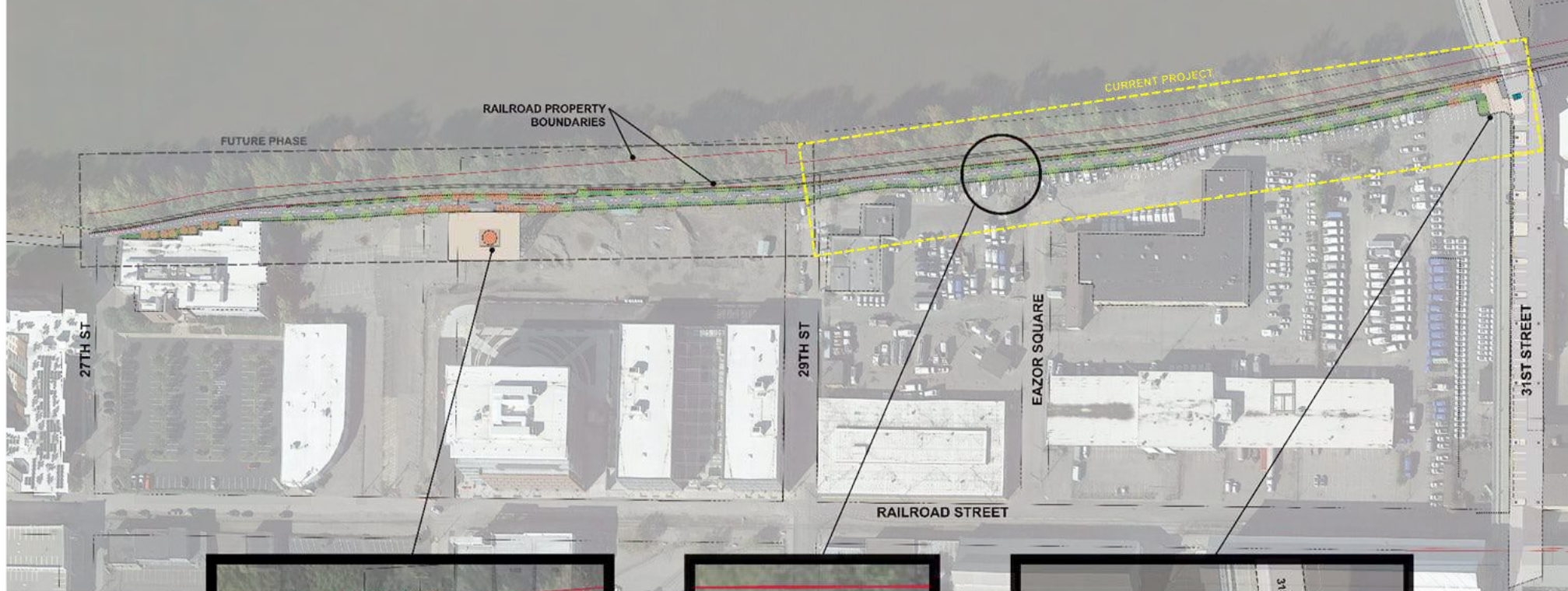






Photo credit: Riverlife

# Riverlife

[riverlifepgh.org](http://riverlifepgh.org)

Gavin White  
Director of Planning and Projects  
[gavin@riverlifepgh.org](mailto:gavin@riverlifepgh.org)  
(412) 258-6636, ext. 106





# RIVERFRONT TRAIL IMPROVEMENTS

**Alex Toner**

Friends of the Riverfront





# Strip District Neighbors Town Hall

Alex J. Toner

Trail Stewardship  
Program Manager

April 24, 2024



## 2023 in the Strip District

- 7 Trail Care opportunities
  - 108 volunteers
  - 271 Vol hours
  - 40 staff event hours
  - 1,235 lbs removed
- 5 focused on intentional restoration projects
  - Allegheny Goatscape
  - Fruittown Landcare Company
- **Partners:** SDN, 3R Sustainability, Buncher, City of Pittsburgh, District & Edge



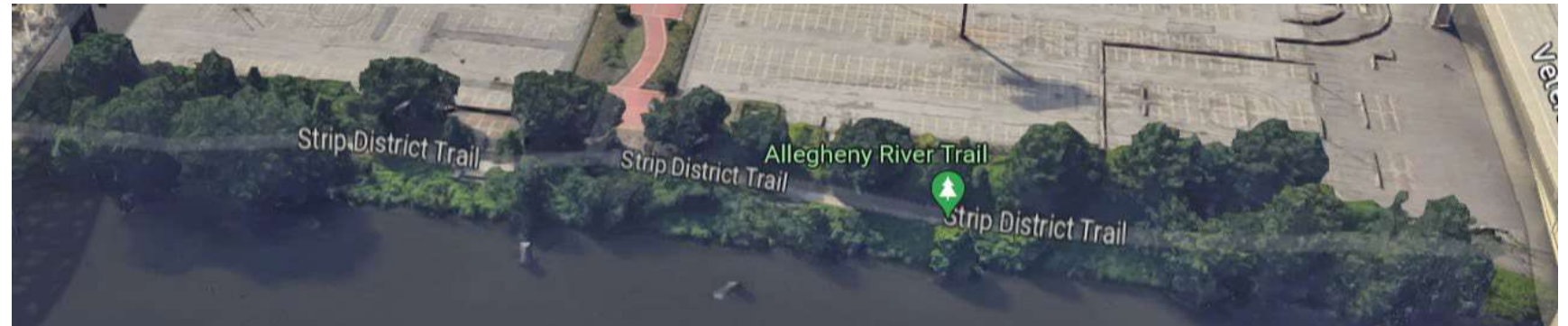


# Restoration Project Sites



Zone 1: 11<sup>th</sup> to Vets Bridge

Zone 2: Vets Bridge to 16<sup>th</sup>



Zone 3: 16<sup>th</sup> to 18<sup>th</sup>



## 2024 in the Strip District

- **Zone 1:** Davey Tree Service clearing and pruning 1,000 feet of riverfront viewshed
- **Zone 2:** Friends staff planting 25 native tree planting and broadcasting riparian pollinator seed mix
- **Zone 3:** Native reseeding and continued vegetation removal from viewshed
- Trail Stewards: Harris Jones & Mel Fetsko
- Strip District Light Repairs



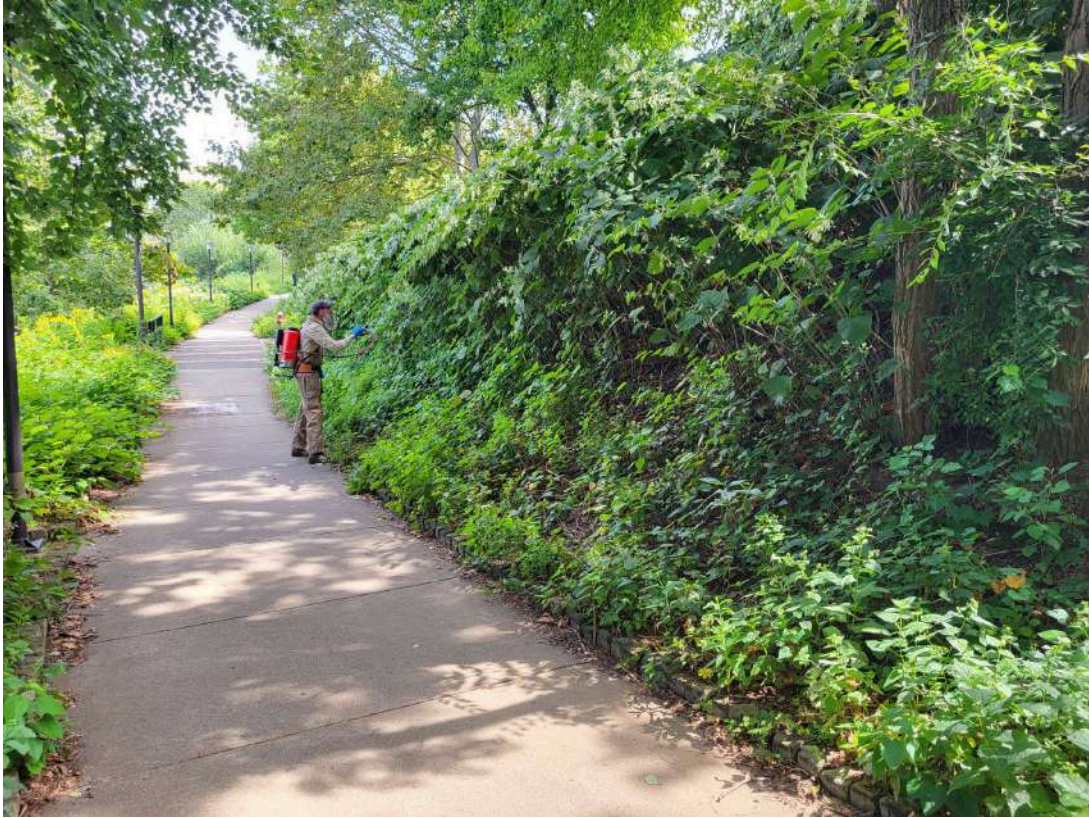


# Zone 1: 11th Street to Vets Bridge





# Zone 2: Vets Bridge to 16<sup>th</sup> Street





# Zone 3: 16<sup>th</sup> Street to 18th Street





# Get Involved!

- Submit 311s
- Volunteer
  - Public Trail Care
  - Custom Employer Trail Care
  - Trail Stewards & Ambassadors
- Sponsor
  - Trail Stewardship Program
  - Strip District Trail Segment
- Become a member
  - Individuals & Families
  - Corporate
  - *Friends Fest 6/20 Millvale Riverfront Park*
- Donate
  - Support a safe, accessible, and clean riverfront trail system







Alex J. Toner

Trail Stewardship Program Manager

[alex@friendsoftheriverfront.org](mailto:alex@friendsoftheriverfront.org)

814-573-9217





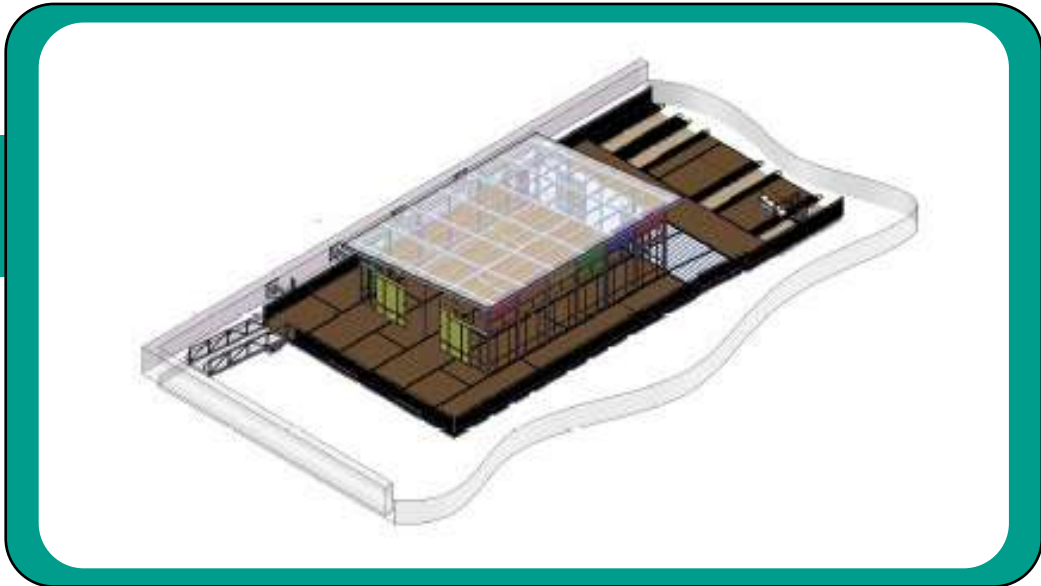


# KAYAK PITTSBURGH COMMUNITY HUB

**Amy O'Neill**

Venture Outdoors





# Our New Home in 2024

- 80 ft x 50 ft (approx.) floating dock, attached at the seawall
- Security cameras, lights, and other safety features
- Solar power recharging stations
- Fleet of 75+ boats
- Accessible launch for adaptive paddlers
- ACA Pro Paddle School (1st in PA!)
- Visit Pittsburgh Information Center
- River access for
  - Convention/corporate group kayaks
  - Downtown employee wellness programs
  - Fishing, Education, & Sightseeing



Downtown  
Community Hub







## 1st ADAPTIVE LAUNCH

- Our dock will have sufficient space to maneuver and store multiple wheelchairs.
- A tiered boarding bench will allow the user to board from their wheelchair.
- A pull-out seat that slides out over the kayak and directly above the vessel's cockpit, allowing adaptive paddlers to slide across the seat and lower themselves into the vessel with a minimal drop.

“Accessible means you can physically get there. A fully adaptive kayak launch provides not only accessibility, but the components needed by a paddler with disabilities to get in and out of their vessel independently and safely.”

~ Ken Ryno, C5/C6 incomplete quadriplegic adaptive kayaker

Downtown  
Community Hub











## We're Moving!

After renting kayaks under the 6th street bridge for the past 20 years, construction required us to move our facility.

Our new location, on the Allegheny River outside of the DLL Convention Center, was planned in partnership with the Sports & Exhibition Authority, Riverlife, & Visit Pittsburgh.

The new Kayak Pittsburgh Downtown Community Hub will include an open-air storage facility for paddlesport gear and the first fully-accessible multi-slip kayak launch in the Downtown pool.

Downtown  
Community Hub







# URBAN PLAZAS

**Breanna Tyson &  
Courtney List**

Strip District Neighbors



# Ping Pong Park...

## a summer long pop-up

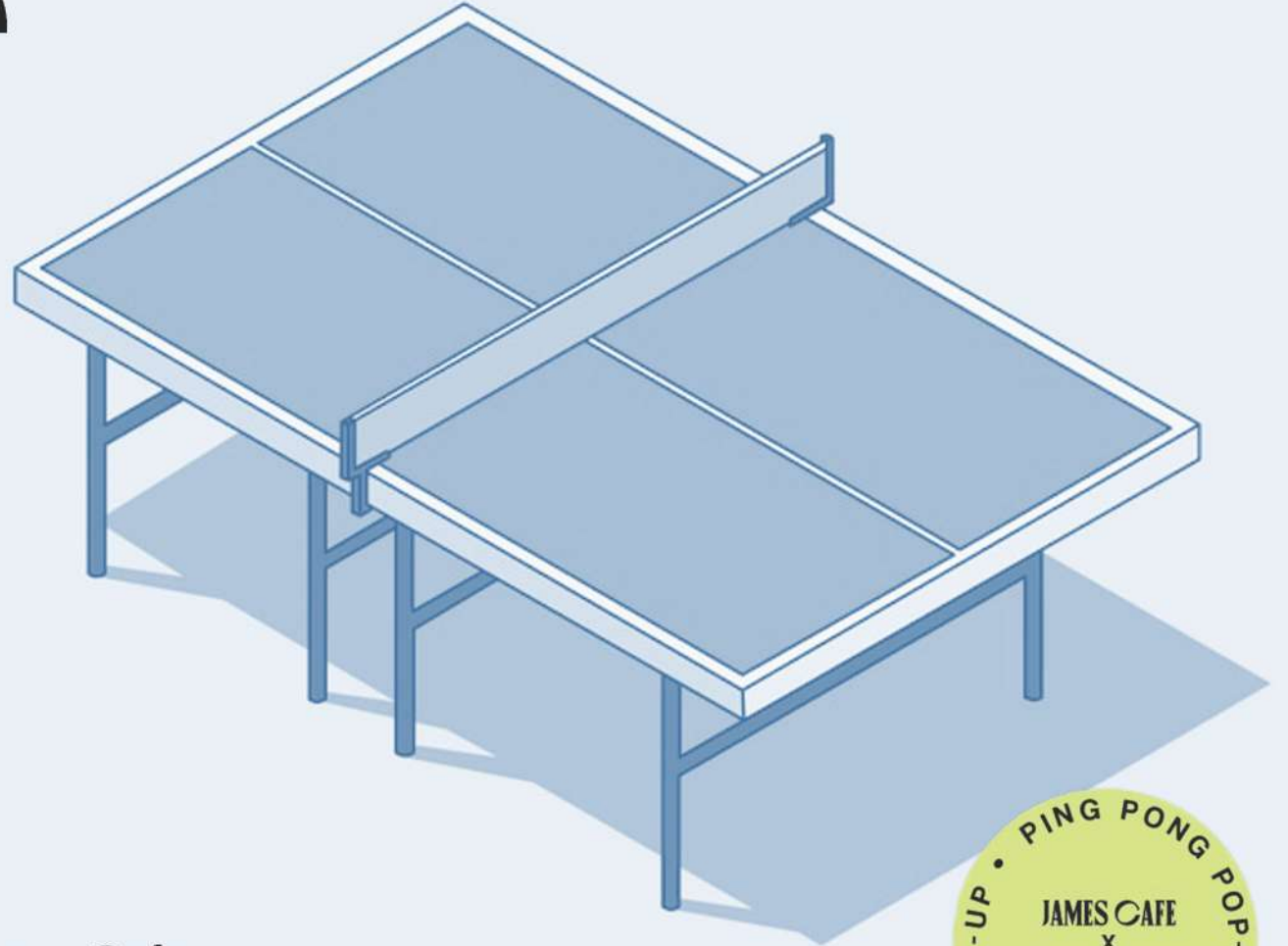
Join us for a summer of fun at the plaza between 25th and 26th on Smallman Street!

Every weekend from June to August, we'll be activating the space with exciting games including Ping Pong tables.

Stay tuned for more details on Strip District Neighbors' social media channels and our upcoming website, [www.pingpongpgh.com](http://www.pingpongpgh.com).

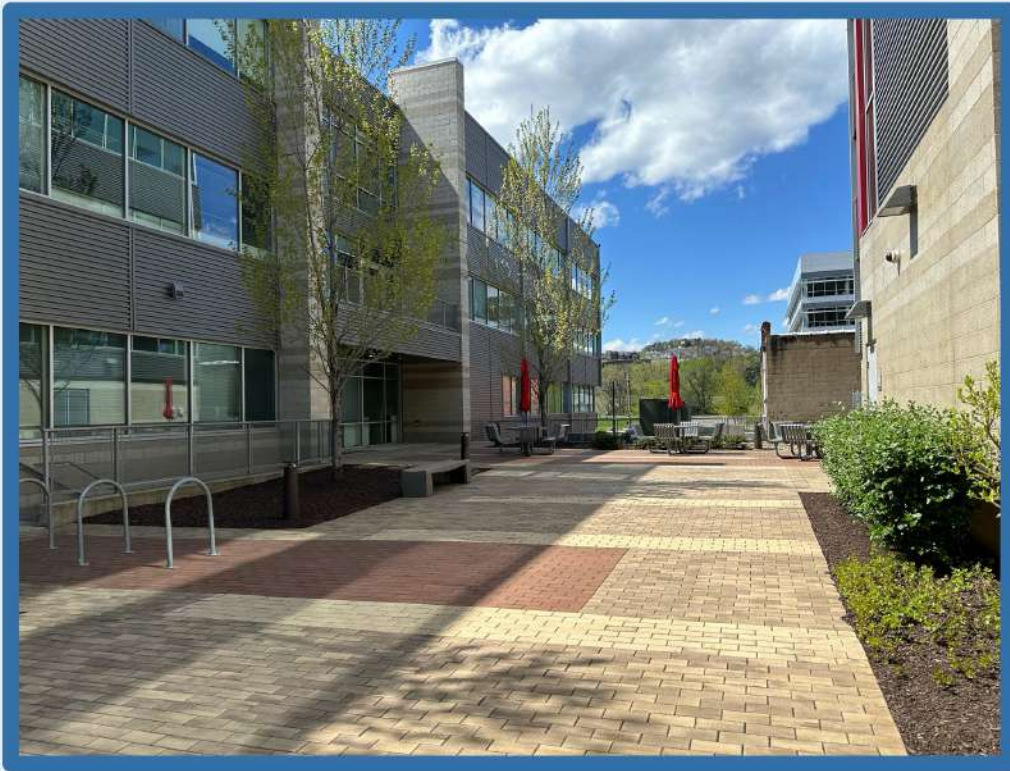
This event is open to the public!

Event is held in collaboration with 3 Crossings x James Cafe





# Ping Pong Park...





# UPCOMING NEIGHBOR NIGHTS

LAST WEDNESDAY EACH MONTH  
5PM – 7PM

**April 24**  
Cancer Bridges

**May 29**  
Bass & Bennett

**June 26**  
BALVANERA

**July 31**  
Pittsburgh Opera

**August 28**  
Klavon's

**September 25**  
31<sup>st</sup> Street Lofts

**October 30**  
Brewer's Block

**November 27**  
PA Market





# UPCOMING EVENTS

## FITNESS

### SweatNet Classes

Monthly

4<sup>th</sup> Tuesday

Stacks Fitness

### 5K Brew Run

April 27<sup>th</sup>

The Terminal

### Body Rock

April 28<sup>th</sup>

The Vision

## SHOPPING

### Markets at The Terminal

Weekly - Saturday

11am – 3pm

The Terminal

### Mother's Day Market

May 12<sup>th</sup>

The Terminal

### Night Markets

Monthly

1<sup>st</sup> Friday

June - Sept

The Terminal





# MARKETING

**Would You Like to See  
Your Event Listed Here  
and In Other Strip District  
Neighbors Promotions?**

**Email Us**

**MARKETING@SDNPGH.ORG**

**FOLLOW US  
ON FACEBOOK FOR  
MORE DETAILS**





# UPCOMING EVENTS

## COMMUNITY

### Tunes at The Terminal

Weekly - Saturday

11am – 2pm

The Terminal

### Mac N' Cheese Fest

May 18<sup>th</sup>

The Stacks

### Luxury Car Show

Pittsburgh Vintage Grand

Prix

June 8<sup>th</sup>

The Terminal

## DINING

### Food Trucks

April – October

Wednesdays

11:30am – 1pm

26<sup>th</sup> & Railroad

@ 3 Crossings







# COMPLETING THE LOOP & THE BIG PICTURE

**Matt Galluzo**

Riverlife





# ANNOUNCEMENTS

**Pamela Austin**

Strip District Neighbors





SAFE NEIGHBORHOODS. WELCOMING COMMUNITIES. THRIVING PEOPLE.

## JOIN US TO CREATE A SAFER PENN AVENUE FOR ALL

Our streets reflect our values.

The Strip District's Penn Avenue corridor, **between 22nd Street and 31st Street**, has one of the highest reported crash rates in the City of Pittsburgh\*.

Mayor Gainey wants to hear from all who **live, shop, visit, conduct business, and travel through the Strip District** about how we can make Penn Avenue safe and vibrant for all who love it.

Please join us:



Wednesday, May 1, 2024



Small bites provided



6:00 PM - 7:30 PM  
*(Registration will begin at 5:30pm)*



**The Original Pittsburgh Winery**  
2809 Penn Ave 15222  
*(Meeting will also be livestreamed)*



Hosted by the **Mayor's Office of Neighborhood Services** and the **Department of Mobility and Infrastructure (DOMI)**.  
**Questions?** Contact Jan Raether at 412.522.6931

\*PennDOT Crash Data 2018-2022

To RSVP email [neighbor@pittsburghpa.gov](mailto:neighbor@pittsburghpa.gov) or call 311. RSVPs are appreciated.

To watch the livestream, or learn more about the project, visit EngagePGH:

[bit.ly/pennavestrip](https://bit.ly/pennavestrip)



Any individual who requires an accommodation for effective communication or a modification of policies or procedures to attend and/or participate in a program, service, or activity provided by the City of Pittsburgh should contact the City ADA Coordinator by emailing [ada@pittsburghpa.gov](mailto:ada@pittsburghpa.gov).

# PENN AVENUE SAFETY MEETING

May 1<sup>st</sup>

6:00PM

The Original Pittsburgh Winery



# STREET PAVING

- 20<sup>th</sup> Street to Penn Avenue
- Railroad Street to 28<sup>th</sup> Street
- 32<sup>nd</sup> Street to Penn Avenue



# STREET CLOSURES

## 2929 & 2930 Smallman

Full Closure between 29<sup>th</sup> & 30<sup>th</sup> Streets  
12 Months  
Beginning February 12th

## Pittsburgh Marathon

May 5<sup>th</sup>  
Liberty Avenue – Full Length  
Penn Avenue – 16<sup>th</sup> – 30<sup>th</sup>

## Rush to Crush Cancer

May 19<sup>th</sup>  
Penn Avenue – Downtown – 31<sup>st</sup> Street Bridge











# CONTACT US

**PRESIDENT, SECRETARY,  
DEVELOPMENT REVIEW,  
COMMUNITY PLANNING**

**[INFO@SDNPGH.ORG](mailto:INFO@SDNPGH.ORG)**

**NEWSLETTER, SOCIAL MEDIA,  
EVENTS, SPONSORSHIP &  
MEMBERSHIP**

**[MARKETING@SDNPGH.ORG](mailto:MARKETING@SDNPGH.ORG)**

**DONATIONS & BILLING**

**[ACCOUNTING@SDNPGH.ORG](mailto:ACCOUNTING@SDNPGH.ORG)**



# EXECUTIVE COMMITTEE

Pamela Austin, **President**

Breanna Tyson, **First Vice President**

Kate Wentroble, **Second Vice President**

Corin Giglio, **Secretary**

James Gehlke, **Treasurer**

**Community Development**

Geoff Campbell, Chip Desmone,  
Jana Lake

**Governance** - Nick Bunner

**Marketing** - Courtney List

**Membership** - Kate Wentroble

**Safety and Security** - Sandy Hanberry



# BOARD OF DIRECTORS

**Pamela Austin**

**Cory Bonnet**

**Nick Bunner**

**Geoff Campbell**

**Chip Desmone**

**Alyssa Falarski**

**Tim Gaber**

**James Gehlke**

**Corin Giglio**

**Sandy Hanberry**

**Nick Hartner**

**Kevin Kerr**

**Rachealllee Lacek**

**Jana Lake**

**Courtney List**

**Rob Mullin**

**Jan Receski**

**Lacy Schaefer**

**Craig Silverblatt**

**Brady Smith**

**Catina Stamoolis**

**Megan Stearman**

**Breanna Tyson**

**Dean Welch**

**Kate Wentroble**



# ADVISORY BOARD

**Jace Armentrout**

**Kathy Buechel**

**Denise Colangelo**

**Frank Corrado**

**JoAnn Fabrizio**

**Christina French**

**Jeff Hertweck**

**Jonathan Hudson**

**Pam Kamath**

**Shawn Kichline**

**Erica Lee**

**David Morgan**

**Rachel Rampa**

**JJ Richardson**

**Matt Scoletti**

**Benjamin Singleton**

**Rose Tomassi**

**Abby Tomczuk**

**Michael Troiani**

**John Valentine**

**Judy Watts**

**Robb Wilson**



# EMERITUS MEMBERS

**Candi Cybator**

**Andrew Masich**

**Chuck Hammel**

**Sara Moeller**

**Jeff Kumer**

**Don Orkosky**

**Michael Kutzer**

**William Perry**

**Joseph Lagana**

**Alan Siger**



# SDN FundED

Join us in our mission and help us to keep the Strip District growing while preserving its uniqueness and special flavor that truly makes it a regional treasure and a one-of-a-kind neighborhood.

